

Re-fè

USE AND CLEANING MANUAL



Re-fè | Coffee Capsules Opener

Produced by: Federico Girotto

Headquarter: Via Ruggero Leoncavallo, 12 – 31100 Treviso

Mobile: +39 3495261041

Mail: team@re-fe.com

Re-fè

USE AND CLEANING MANUAL

In case of technical assistance on the product, please contact Federico Girotto

General introduction

BEFORE PERFORMING ANY OPERATION WITH THE PRODUCT UNDER CONSIDERATION, IT IS NECESSARY TO HAVE AT LEAST READ THE ENTIRE MANUAL AND THEN HAVE GONE THROUGH THE SUBJECT RELATED TO THE OPERATIONS YOU INTEND TO PERFORM.

This manual contains proprietary information and must not be, even partially, provided to third parties for any use and in any form whatsoever, without the prior written consent of the company Federico Girotto. Federico Girotto declares that the information contained in this document is congruent with the technical specifications and safety specifications of Re-fè - coffee capsules opener, to which the manual refers. A true copy of this document is deposited in the technical file of the product, kept at Federico Girotto. Federico Girotto does not acknowledge any documentation that has not been produced, issued, or distributed by himself by his authorized representative.

This manual as well as the entire technical file will be retained by the manufacturer for the period required by law.

During this period, copies of the documentation accompanying the product may be requested at the time of sale.

The entire technical file shall remain available for this period only to the inspection authorities, who may request a copy.

After that period, it will be the obligation and care of those handling the product to ensure that both the product and the documentation comply with the laws in force, at the time of the inspection.

Warnings

This manual describes the general safety rules to be observed during any operation performed with Re-fè - coffee capsule opener. The procedures described in the following paragraphs must be carried out respecting both the indicated methods of execution and the general safety rules. Different countries may have different regulations related to safety. Therefore, it should be noted that in all cases where the regulations in the manuals conflict with or are reductive to the regulations of the nation where the product is sold and used, the regulations of the nation will still take precedence over those of the manuals.

Re-fè

- The product is modular and consists of four components:
 - glass jar
 - screwable aluminum capsule
 - screwable bioplastic base
 - sliding bioplastic press
- The product under consideration, consisting of the individual components, is intended to be used solely and exclusively as a tool for:
 - the separation of used aluminum coffee capsules, from the related coffee grounds
 - collecting and storing of coffee grounds, food or other materials in the glass jar
- Remove bioplastic components before prolonged storage of coffee grounds, food or material inside the glass jar
- Do not use the bioplastic material components for food storage. The storage of coffee grounds, food or other materials can only take place in the glass jar, whether or not equipped with a screwable aluminum capsule.
- The glass jar, with its attached avitable aluminum capsule, can be stored in the refrigerator. Do not store bioplastic material components in the refrigerator
- Wash the glass jar and the screwable aluminum capsule, either by hand or in a dishwasher, before using it for an extended time as a container to collect coffee grounds, food or other materials
- Do not use the product with plastic capsules or other materials other than aluminum. The product is compatible only with Nespresso Original compatible aluminum capsule brands®*.
*The Nespresso brand is owned by Société des Produits Nestlé S.A.
- Waste obtained from the opening of spent coffee capsules is not to be considered food, so it is forbidden to bring any material or waste obtained from the use of the product to the mouth
- Check upon receipt the integrity of the product and individual components. If you find any damage, lack, deformation or trace of impacts due to transportation, notify the company Federico Giroto at email team@re-fe.com before proceeding to the next steps
- Keep product packaging and wrappings out of the reach of children. Dispose of them in accordance with current paper waste recycling regulations
- The product **is not a toy** and under no circumstances can and should be made available to children (individuals under the age of 14 years) in play activities
- Never bring the product to your mouth
- Do not leave the product near heat sources or continuously expose it to sunlight
- Do not subject the product to open flames
- Do not subject the product to weather agents
- Do not subject the product to forces or pressures for which it is not intended
- Do not tamper with the product or any part of its components
- Store the product, before assembly and use, inside the original packaging or an unopened container (e.g., box), in a dry and clean place, away from heat sources and weather agents
- Store the product after display/positioning, in a dry and clean place, away from heat sources, open flames and atmospheric agents
- Prevent the package and product from coming into contact with sharp edges and abrasive surfaces
- In case the product, as a result of a bump or other accident, has sharp edges, splinters, cracks, and/or other deformities that could damage the users' skin or otherwise make it dangerous, contact the manufacturer for technical assistance or proceed to its disposal
- The product is modular, composed of more components. The undamaged components can continue to be used until they are worn out or damaged
- Do not use the damaged or worn components
- Individual damaged or worn components can be purchased individually by contacting support at team@re-fe.com or by visiting re-fe.com

Re-fè

DISPOSAL: The glass component can be disposed in glass waste. The aluminum jar capsule can be disposed of in the aluminum waste. The bioplastic material components are subject to special collection at the end of the life cycle. Do not dispose bioplastic material components in organic waste for any reason. Refer to current local regulations for waste disposal. The company Federico Giroto provides a collection and recycling program for bioplastic material components. Contact the manufacturer at email team@re-fe.com or visit re-fe.com for instructions on this matter.

NOTE: IF THE PRODUCT IS GIVEN TO A THIRD PARTY, ALL DOCUMENTATION MUST BE HANDED OVER WITH IT.

Features

THE PRODUCT UNDER CONSIDERATION MUST NOT AND CANNOT BE MADE AVAILABLE TO CHILDREN (INDIVIDUALS UNDER 14 YEARS OF AGE) IN PLAY ACTIVITIES, AS IT IS NOT A TOY.

THE PRODUCT UNDER REVIEW SHOULD NOT AND CANNOT BE MADE AVAILABLE TO SUBJECTS WITH LIMITED ABILITIES WHO MIGHT USE IT IMPROPERLY.

The product described in the paper is an instrument composed of four components: glass jar, aluminum capsule screwable to the jar, bioplastic base screwable to the jar, bioplastic press sliding on the bioplastic base. The tool is required for the separation of used coffee capsules made of aluminum, from the coffee grounds contained within them. There is a product variant:

- **Re-fè Original** Weight: 460 g. Dimensions: 12.2 x 8.7 x 8.7 cm (h x w x d)

Handling

The weight and size of the product are such that it can be handled by hand. During the operation avoid contact with sharp edges, sharp protrusions and abrasive materials that could damage it. Avoid any dropping of the product.

Use

Three different scenarios for the proper use of the product are described below

Scenario 1: product already assembled

1. Place the product on a horizontal surface that can support its weight, the pressure subjected to it and capable of ensuring its stability such that it will not fall or tip over
2. Remove the sliding bioplastic cover
3. Place the used aluminum coffee capsule vertically, with the base of the capsule facing down, so that the base of the coffee capsule coincides with the dedicated hole in the base of the bioplastic component
4. Place the sliding bioplastic press perpendicular to the base. Apply pressure on the vertical axis of the top surface, with one or two hands, until the press slides totally until it reaches the end stop

Re-fè

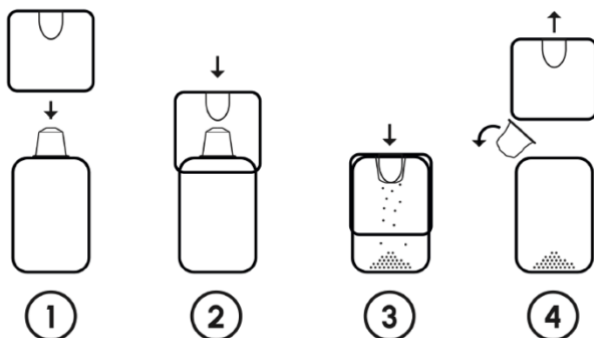
5. Remove the cover by sliding it vertically
6. Manually remove the aluminum coffee capsule
7. Repeat the action from step 3 to step 4 until the glass container is full, i.e. indicatively after the use of 15 coffee capsules
8. In the moment the glass jar is full of coffee grounds: unscrew the screwable bioplastic base and empty the contents of the glass jar. Then screw again to resume the proper operation of the product. Verify that the base is screwed in and functioning properly. Do not exert excessive force when screwing it in, which will cause the component to break
9. Repeat the action from step 3.

Scenario 2: product to be assembled

1. Place the glass jar on a horizontal surface that can support its weight, the pressure subjected and capable of ensuring its stability such that it will not fall or tip over
2. Screw the bioplastic base, with the hole in the center, to the glass jar. Verify that the base is screwed down and properly functioning. Do not exert excessive force during screwing, which would cause the component to break
3. Place the used aluminum coffee capsule vertically, with its base facing down, so that the base of the coffee capsule coincides with the dedicated hole in the base of the bioplastic component
4. Place the sliding bioplastic press perpendicular to the base. Apply pressure on the vertical axis of the top surface, with one or two hands, until the press slides totally until it reaches the end stop
5. Remove the covering by sliding it vertically
6. Remove the aluminum coffee capsule by hand
7. Repeat the action from step 3 to step 4 until the glass container is full, i.e. indicatively after the use of 15 coffee capsules
8. In the moment the glass jar is full of coffee grounds: unscrew the screwable bioplastic base and empty the contents of the glass jar. Then screw again to resume the proper operation of the product. Verify that the base is screwed in and functioning properly. Do not exert excessive force when screwing it in, which will cause the component to break
9. Repeat the action from step 3.

Scenario 3: Use of the glass jar for collection/storage

1. Remove all bioplastic material components
2. If not already filled, fill the glass jar with coffee grounds, food or other materials
3. Screw the screwable aluminum capsule to the glass jar
4. Place the jar on a horizontal surface that can support its weight and can ensure its stability such that it will not fall or tip over.



Operating illustration for opening the coffee capsule

Re-fè

CAUTION: CAPSULES MADE OF PLASTIC OR OTHER MATERIALS OTHER THAN ALUMINUM ARE NOT COMPATIBLE WITH THE PRODUCT. THE PRODUCT SUPPORTS ALL BRANDS OF ALUMINUM CAPSULES COMPATIBLE WITH NESPRESSO®* ORIGINAL, excluding capsules for professional, 'built in' and models Nespresso®* Vertuo. Not compatible with plastic capsules, other materials and other models.

*The Nespresso trademark is the property of Société des Produits Nestlé S.A. and is not traceable in any way to Re-fè or the manufacturer.

It is absolutely forbidden to:

- Have the product used by persons in an altered condition due to the influence of drugs or alcohol
- Use the product if it is damaged and/or dangerous
- Use the product for violent purposes

NOTE: THE COMPANY FEDERICO GIROTTO CANNOT BE HELD RESPONSIBLE UNDER ANY CIRCUMSTANCES FOR ACCIDENTS OR DAMAGES RESULTING FROM THE INAPPROPRIATE USE OF THE PRODUCT, AS WELL AS FROM THE NON-OBSERVANCE, EVEN PARTIAL, OF THE SAFETY RULES AND INTERVENTION PROCEDURES DESCRIBED IN THE DOCUMENT.

Cleaning and maintenance

The product, periodically and whenever deemed necessary, should be cleaned to prevent it from becoming an accumulation of dust and dirt and be damaged by them.

CAUTION: DO NOT WASH BIOPLASTIC MATERIAL COMPONENTS IN THE DISHWASHER. To clean the product, simply wipe it gently with a dry cloth or dampened in cold or lukewarm.

CAUTION: DO NOT USE SOLVENTS OR DETERGENTS OF ANY KIND.

If damages to the product are found during a cleaning activity that makes it dangerous, you must discontinue its use, contact technical assistance, or dispose it properly.

Disposal

The cardboard packing box, after being removed, should be disposed of in the sorted waste, according to current regulations.

The product must be disposed in a condition where it can no longer be used for the purposes for which it was originally designed and manufactured, while still making possible the re-use of the raw materials that make it constituents. Refer to current local waste disposal regulations. Do not disperse in any way either the enclosures or the product into the environment.

Data of the person responsible for placing on the market

Company name	Federico Girotto
Head office	Via Ruggero Leoncavallo, 12 - Treviso P.IVA 04919840266
PEC	federicogiroto@postecert.it
Email	team@re-fe.com
Website	re-fe.com

Re-fè

Warranty

The warranty regulations, listed in full in the purchase contract, are valid only if the product is used under the intended conditions of use.

The warranty does not extend to damage caused by inexperience or negligence in the use of the product, or by poor storage.

Products sold by us are covered by warranty with regard to the following conditions:

1. The warranty is valid for a period of 12 or 24 months depending on the type of purchaser
2. The Manufacturing Company undertakes to replace at its own discretion the parts of faulty manufacture, only after careful inspection and finding of poor construction
3. It is always the buyer's responsibility to pay the transportation and/or shipping costs in case of misuse of the warranty
4. During the warranty period, replaced products become the property of the manufacturer
5. Only the original purchaser who has complied with the instructions for normal use, cleaning and storage contained in the manual may benefit from this warranty. Our responsibility for the warranty expires when: the original owner transfers ownership of the product, or modifications have been made to the same
6. The warranty does not include damage resulting from excessive strain such as using the product after the discovery of a fault, the use of unsuitable operating methods as well as from failure to observe the operating instructions
7. The manufacturer assumes no responsibility for any difficulties arising in the resale or use abroad due to the regulations in force in the country where the product was sold.
8. The defective product or part of the defective product must be delivered to the manufacturer for replacement; otherwise the replaced part will be charged to the purchaser.

Notice: if it is deemed necessary to use the warranty, please provide the following information:

1. Type
2. Date of purchase (presentation of purchase document)
3. Detailed description of the problem

NOTE: FAILURE TO COMPLY WITH HOW TO USE THE PRODUCT DESCRIBED IN THIS DOCUMENTATION WILL RESULT IN VOIDING THE WARRANTY TERMS.